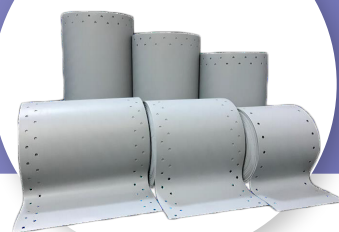


TERMOELAST TE DTB



DESCRIPTION



MAROF LINE TERMOELAST TE Thermoplastic elastomer-based dilatation tape is a dilatation tape with permanent elasticity used in all kinds of construction and expansion joints.

NOTE:

The high-performance MAROFLIKIT POLYEPOXY MY MORTAR 2K epoxy adhesive should be used as adhesive during application.

FIELDS OF USAGE



- In underground applications, since it is resistant to plant roots.
- In waterproofing of horizontal/vertical dilatations.
- In the insulation of wide and irregular cracks.
- In elastic waterproofing of base-parapet joints.
- In the joints of different building materials such as steel construction and reinforced concrete.
- In swimming pools and waste water units.
- In tunnels and similar underground structures.

NOTE:

Please note that the material should be at a temperature between +15°C and +25°C at the time of mixing.

ADVANTAGES



- High UV resistance.
- High resistance to plant roots.
- Resistant to bacterial attacks and chemical degradation.
- High resistance to environmental effects and aggressive environments.
- Easy to Process.
- High elasticity.

PREPARING THE SURFACE FOR APPLICATION

- Application surfaces should be dry, clean and free from free particles.

APPLICATION



- 1) APPLYING MAROFLIKIT POLYEPOXY MY MORTAR 2K :
 - MAROFLIKIT POLYEPOXY MY MORTAR 2K epoxy adhesive has two components. Before the application, first, component A (3.75 kg) and component B (1.25 kg) are mixed with a low-speed mixer until they become a homogeneous mixture.
 - By using a trowel and spatula, MAROFLIKIT POLYEPOXY MY MORTAR 2K epoxy adhesive is applied as approximately 1.0 – 1.5 mm to the sides of the dilatation.
 - Application width should be at least 40 mm for the

20-cm-wide tape and at least 50 mm for 30-cm-wide tape.

- To ensure strong adherence, the adhesive must be thoroughly absorbed into the floor during application.

2) Application of MAROF LINE TERMOELAST TE Tape:

- Suitable lengths of tapes are prepared by determining the application area, tapes that require splicing are prepared by boiling them with a hot air gun before application. MAROFLIKIT POLYEPOXY MY MORTAR 2K epoxy adhesive cannot be used for this process.
- MAROF LINE TERMOELAST TE dilatation tape is laid on the adhesive layer and by means of a suitable roller, full contact is ensured between the MAROF LINE TERMOELAST TE dilatation tape and the adhesive layer.
- Similarly, MAROFLIKIT POLYEPOXY MY MORTAR 2K epoxy adhesive is applied to the top side of the tape.
- The application is conducted in a way that the thickness is of 1.0 – 1.5 mm and the tape overflows at least 20 mm, and then the layer is left to harden.

CAUTION



- The tape should not be moved or lifted, be protected against water and not be mechanically forced until the MAROFLIKIT POLYEPOXY MY MORTAR 2K epoxy adhesive is fully cured.
- It should be taken into account that the drying time of the adhesive will be longer in cold weather and shorter in hot weather.

SHELF LIFE AND STORAGE



- Store in a dry and cool environment (at temperatures above +5 °C), unopened in its original package.



PACKAGING



- 25m roll

PRODUCT CODE



1. MAROFLİNE TERMOELAST TE -150/1D: 150 x 1 mm DTB
2. MAROFLİNE TERMOELAST TE -200/1D: 200 x 1 mm DTB
3. MAROFLİNE TERMOELAST TE -250/1D: 250 x 1 mm DTB
4. MAROFLİNE TERMOELAST TE -300/1D: 300 x 1 mm DTB
5. MAROFLİNE TERMOELAST TE -350/1D: 350 x 1 mm DTB
6. MAROFLİNE TERMOELAST TE -400/1D: 400 x 1 mm DTB
7. MAROFLİNE TERMOELAST TE -150/1.25D: 150 x 1.25 mm DTB
8. MAROFLİNE TERMOELAST TE -200/1.25D: 200 x 1.25 mm DTB
9. MAROFLİNE TERMOELAST TE -250/1.25D: 250 x 1.25 mm DTB
10. MAROFLİNE TERMOELAST TE -300/1.25D: 300 x 1.25 mm DTB
11. MAROFLİNE TERMOELAST TE -350/1.25D: 350 x 1.25 mm DTB
12. MAROFLİNE TERMOELAST TE -400/1.25D: 400 x 1.25 mm DTB
13. MAROFLİNE TERMOELAST TE -150/1.5D: 150 x 1.5 mm DTB
14. MAROFLİNE TERMOELAST TE -200/1.5D: 200 x 1.5 mm DTB
15. MAROFLİNE TERMOELAST TE -250/1.5D: 250 x 1.5 mm DTB
16. MAROFLİNE TERMOELAST TE -300/1.5D: 300 x 1.5 mm DTB
17. MAROFLİNE TERMOELAST TE -350/1.5D: 350 x 1.5 mm DTB
18. MAROFLİNE TERMOELAST TE -400/1.5D: 400 x 1.5 mm DTB
19. MAROFLİNE TERMOELAST TE -150/1D: 150 x 2 mm DTB
20. MAROFLİNE TERMOELAST TE -200/1D: 200 x 2 mm DTB
21. MAROFLİNE TERMOELAST TE -250/1D: 250 x 2 mm DTB
22. MAROFLİNE TERMOELAST TE -300/1D: 300 x 2 mm DTB
23. MAROFLİNE TERMOELAST TE -350/1D: 350 x 2 mm DTB
24. MAROFLİNE TERMOELAST TE -400/1D: 400 x 2 mm DTB

CAUTION

- Floor and ambient temperature and humidity should be taken into account in applications made in open and closed spaces.



TECHNICAL SPECIFICATIONS

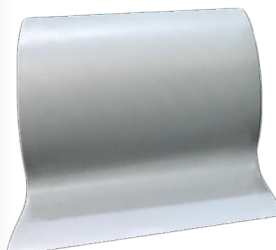
TEST	STANDART	UNIT	VALUE
Tensile Strength (Transverse)	EN-ISO 527-3	MPa	4,7
Tensile Strength (Transverse)	EN-ISO 527-3	MPa	4,8
Elongation at Maximum Load (Transverse)	EN-ISO 527-3	%	580
Elongation at Maximum Load (Longitudinal)	EN-ISO 527-3	%	532
Tear Propagation Strength (Transverse)	EN-ISO 12310-2	N/mm ²	48
Tear Propagation Strength (Longitudinal)	EN-ISO 12310-2	N/mm ²	42
Hardness	ISO 868	Shore A	70
Peel Resistance From Epoxy	DIN 16860	N/10mm	> 20
Chemical Resistance	Water-based and bitumen-based base insulations, sea water, waste water, UV rays, hydrolysis, micro-organism		
Colour	RAL 7040		
Water Pressure Resistance	EN 1928	Bar	> 5
Folding in Cold	SIA 280/3	-	No Cracking at -300C
Service Temperature	SIA V280/3+4	-	30 / +800C
Thickness	mm	1-1,25-1,5	
Width	cm	15-20-25-30-35-40	
Weight	gr/cm ²	1,050	



CAUTION

MAROF YAPI is not responsible for any defects or errors that may arise if the product is used on a surface or for properties other than described above.

1- Edgeless Model:



2- Side-Edge Model :

